



HPM 250

Base	CAT®340
Drilling Depth	49 m
Drilling Diameter	3050 mm
Operating Weight	84000 kg
Rotary Effective Torque	315 kNm

Building on our cutting-edge technology, the HPM250 standard mast maintains the simplicity of the smaller models while proving outstanding drilling performances

Specific highlights of the HPM250 HT include high torque rotary, efficiency and performance, ease of transportation and short rig-up time.

A long lifetime equipment to make the job done.



HPM 250

Engineered to perform, built to last.

HPM most powerful drill yet, HPM250 provides great torque and drilling performances, while maintaining the operating simplicity of the smaller models.

Easy to service and simple to operate. HPM250 is a multipurpose drilling rig mounted on a CAT 340 excavator base and CAT expandable & heavy-duty undercarriage.

All the components like kelly bar, rotary and counterweight can be mounted by the machines itself.

The fast and automatic rig-up from the cabin ensure a quick and safe rig-up.

The HPM250 has an effective torque of 315kNm (273.000lbft) and 400kN of crowd pull, proving to currently be the most powerful rig in the HPM fleet.

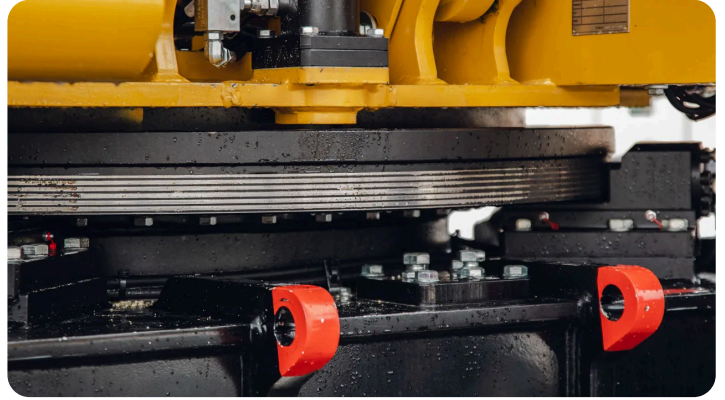
The great torque and great crowd pull will make working with large casings an easy task.



Counterweight Lifting System

This HPM can be assembled by itself without the need of assistant cranes.

This patented feature gives contractors the ability to quickly and easily reduce the overall weight of the rig during the transport phase, making it possible to utilise a standard-sized trailer and reduce then hauling costs and avoids oversize/overweight permits.



Auxiliary House Lock

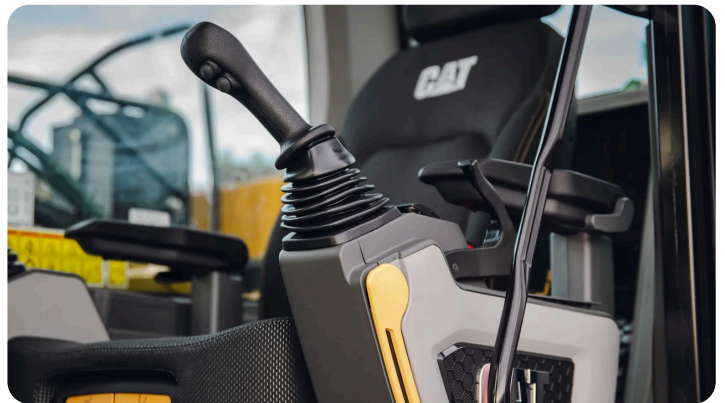
The operator can make the full use of the whole torque without having the machine swinging from side to side.

This patented feature can be automatic or enabled through a button on the joystick. The enabling of the brake offers increased comfort for the operator as the vibrations when drilling on rock are reduced to almost zero.



Low-headroom Configuration

This HPM can be quickly and safely converted in Short Mast configuration allowing it to work in limited heights job sites, such as under bridges or below power lines.



Comfort Cabin

The HPM cabin is equipped with a comfy and wide adjustable seat. The standard automatic air conditioning keeps the cabin at the ideal temperature throughout the day.

All machine interfaces are ergonomically positioned and designed for optimum control and efficiency. The

easy accessible keyboards allow the operator to quickly get the rig ready to drill.



Automatic Functions

Automatic functions allow the operator to reduce rig-up time and get the most in productivity. With a push of a button, the operator can make use of automatic functions, including: Verticality of the mast, Automatic Rig-up, Automatic return to drilling point and rotary auto drive.



Expandable Tracks

The retractable undercarriage allows to reduce width of the machine for transport phases, reducing hauling related costs and avoiding transport permits. Once expanded, the undercarriage provides great stability at any working radius for a 360° drilling capability.



Drilling Cruise Control

The HPM software includes the enabling of the drilling cruise control. When the system is enabled, the operator can preselect the rotary gear so it's speed. With a push of a button the system can be activated and the operator can also lock the crowd pressure for a complete automatic drilling mode. Safety systems can disable the function immediately.



Remote Control

Increase safety and flexibility when loading or unloading the equipment. The operator can make use of different viewing angles while moving the machine from outside the cabin. Having a complete view of the rig during these phases allows the operator to make sure that hoses, wirings and wire ropes are safely positioned. Drilling functions are enabled through the

remote control for a safe service and maintenance of the rig.

TECHNICAL DATA

All data presented refers to the standard model and may vary based on specific equipment configuration and customer requirements.

Need more torque, pull or depth? Contact us to explore the full range of configuration options.



Base	CAT®340
Engine Type	C9.3B
Installed Power	340 kW



Max. Effective Torque	315 kNm
Working Speed	9-24 rpm
Discharge Speed	50-120 rpm



Main winch pull	230 kN
------------------------	--------



Crowd Type	Cylinder Crowd System
Max. crowd force	400 kN
Crowd Stroke	4040 mm



Drilling Depth	49 m
Drilling Diameter	3050 mm



Operating Weight	84000 kg
-------------------------	----------

Transport weight	54700 kg
Transport width	3000 mm
Transport height	3630 mm